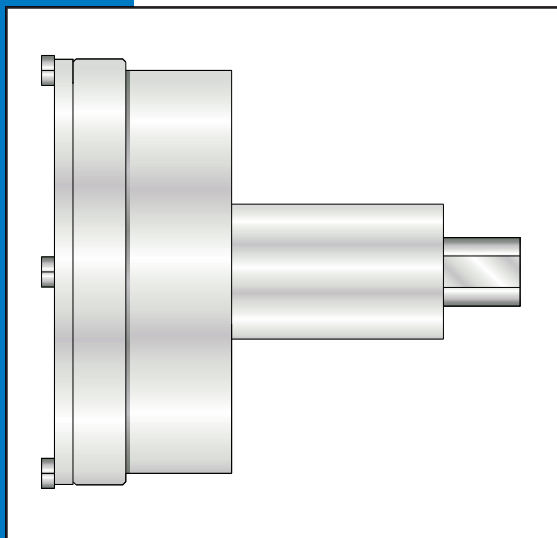


**WELKER®**  
Engineering Company

ISO-9001  
CERTIFIED  
SINCE 1992



# Welker® LSSM-1 Sampler

## Style LSSM-1

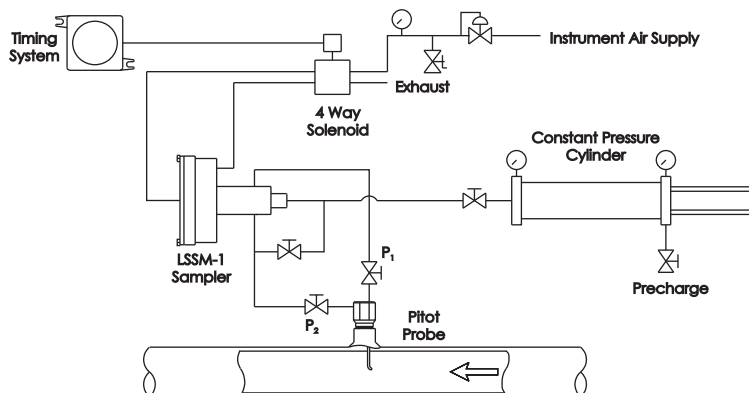
- Fully meets ISO 10715 and API Chapter 14.1
- Works with constant pressure or standard cylinders
- Pneumatically operated
- Line pressures up to 5,000 psi (345 Bar)

The Welker® LSSM-1 is a sampler designed to extract a representative sample of the flowing product out of a bypass stream and pump it into either a constant pressure or standard cylinder. It is a positive displacement pump with the patented Vanishing Chamber™ collection head at the heart of the unit. It has a double acting air actuator to drive the sampler and comes standard with 1/4" NPT connections. Used separately or as part of a complete sampling system, the LSSM-1 will provide the user with an accurate and representative sample of their product.

### Features

- Representative sampling with hot loop through sampler body.
- Samples a fixed volume at full line pressure.
- Equipped with Vanishing Chamber™ collection head.
- Minimum number of moving parts.
- All 316 stainless steel construction.

### Typical Installation Schematic For Gas Service



**Welker® ...When Excellence Counts!**

# Welker® LSSM-1 Sampler

## Specifications\*

### Application

The LSSM-1 sampler can be used with all products that are compatible with the materials of construction and seal material.

### Pressure Rating

Line pressures up to 5,000 psi (345 Bar)

### Temperature Rating

From -4 to +248°F (-20 to +120° C)

### Sample Sizes

Vanishing Chamber™ collection heads available in normal sizes 0.2cc, 0.5cc, 1.0cc and 1.5cc. Alternatively available with 'B' - head in nominal sizes 0.5cc, 1.0cc, 2.0cc, 3.0cc and 4.0cc.

### Sampling Rate

Up to 15 samples per minute with suitable instrument air system.

### Sampler Actuation

Double or single acting air piston motor rated at 120 psi (8 Bar). Both actuating and release time should be 2 second minimum. Sampler actuation can be either time or flow proportional.

### Materials

316 stainless steel construction with Viton PTFE and Fluorotrel seals.

### Connections

Inlet and return, sample outlet and air connections 1/4" NPT.

### Required Utilities

Instrument air 60 to 120 psi (4 to 8 Bar) dependent on line pressure. Air consumption 0.1 scf/grab @ 60 psi (2.9ml/grab @ 4.2 Bar) as single acting; 0.25 scf/grab @ 60 psi (7.1 ml/grab @ 4.2 Bar) as double acting.

**Weight** - 22lbs. (10Kg.)

## Options Available (not limited to)

- 1/2" or 1" NPT inlet and outlet
- 1/2", 1" or 1 1/2" flanged connections 300#, 600#, 900# or 1500# RF/RTJ
- Other materials available
- 'B' type collection head
- 'B' - relief, sand relief or balanced relief
- Certificates (material 3.1, hydro, functional, conformity, etc.)

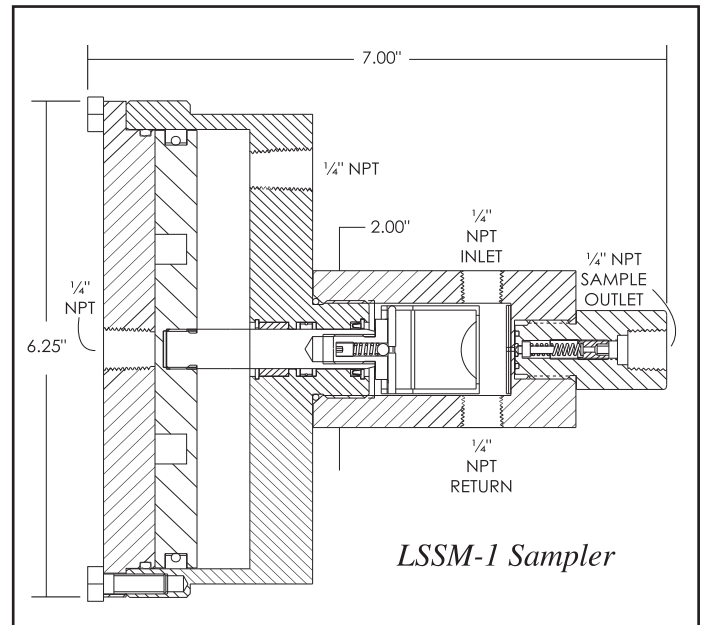
## Other Welker® Products

- In-line probe samplers
- Probe regulators
- Constant pressure cylinders
- Control valves
- Cylinder carrying cases
- Sample take-off probes

Manufactured under one or more of the following U.S. Patents:

4,942,772  
5,303,599  
5,531,130  
5,945,611

\*Specifications subject to change without notice.  
Drawings/Photos may be shown with optional equipment.



Non-standard designs available upon request.



Nordaasdalen 25, 5235 Raadal, Norway  
Contact us:

Name: Per Arve Eriksen  
Jan Arle Netland

Phone: +47 95888526  
+47 92831990

Email: per@fiskal.no  
jan@fiskal.no

