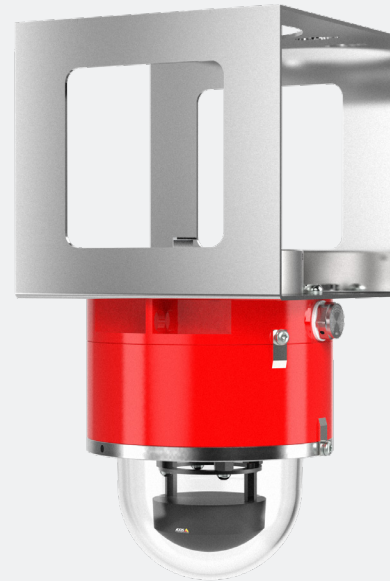


Spectrum D101-X-M3068-P-BD

Explosion-Proof 360° Camera

Key Features

- 12 MP
- 360° Panoramic view
- Forensic WDR, Day/Night Functionality
- Zipstream supporting H.264 and H.265
- Reliable Securing Kit included
- Made in USA
- NDAA-Compliant
- cFMus, Class I/II/III, Division 1, Zone 1/21, IECEx, ATEX, INMETRO, and UKCA approved.
- Operating Temperature: 0°C to +40°C

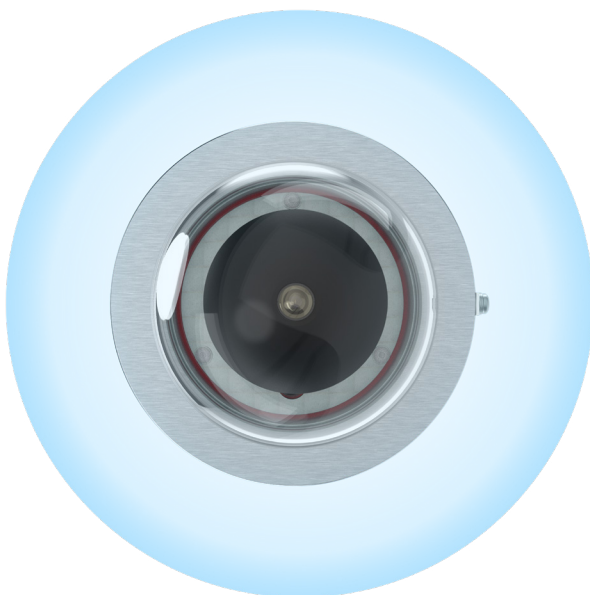


Axis Camera Inside



Description

Spectrum D101-X-M3068-P-BD delivers 360° panoramic views along with a variety of de-warped views. Enclosed in a patented stainless-steel or red aluminum explosion-proof housing, it's certified (cFMus, ATEX, IECEx, INMETRO, and UKCA approved) for use in potentially combustible environments. Sensitivity in poor light is improved with support for day/night functionality. Also, Axis Forensic WDR delivers clarity even when there's both light and dark areas in the scene. Spectrum D101-X-M3068-P-BD is delivered factory focused and features digital roll functionality for easy installation.



Specifications

Spectrum D101-X-M3068-P-BD

Camera		Supported protocols	IPv4, IPv6 USGv6, ICMPv4/ICMPv6, HTTP, HTTP/2, HTTPS, TLSa, QoS Layer 3 DiffServ, FTP, SFTP, CIFS/SMB, SMTP, mDNS (Bonjour), UPnP®, SNMP v1/v2c/v3 (MIB-II), DNS/DNSv6, DDNS, NTP, RTSP, RTP, SRTP, TCP, UDP, IGMPv1/v2/v3, RTCP, ICMP, DHCPv4/v6, ARP, SOCKS, SSH, LLDP, CDP, MQTT v3.1.1, Syslog, Link-Local address (ZeroConf)
Image sensor	12 MP (4000x3000) 1/1.7" progressive scan RGB CMOS		
Lens	1.65 mm, F2.8 Horizontal field of view: 185° Vertical field of view: 185° Fixed iris, IR corrected		
Day and night	Automatically removable infrared-cut filter		
Minimum illumination	Color: 0.32 lux at 50 IRE, F2.8 B/W: 0.06 lux at 50 IRE, F2.8		
Shutter speed	1/22000 s to 1s with 50 Hz		
Camera angle adjustment	Digital roll: 0–360°		
Sensor	AXIS M3068-P		
System on chip (SoC)		System integration	
Model	ARTPEC-7	Application programming interface	Open API for software integration, including VAPIX® and AXIS Camera Application Platform; specifications at axis.com One-Click Cloud Connection ONVIF® Profile G, ONVIF® Profile M, ONVIF® Profile S, and ONVIF® Profile T, specification at onvif.org
Memory	2 GB RAM, 512 MB Flash	Event triggers	Analytics, edge storage events, virtual inputs through API MQTT subscribe
Video		Event actions	Record video: SD card and network share Upload of images or video clips: FTP, SFTP, HTTP, HTTPS, network share and email Pre- and post-alarm video or image buffering for recording or upload Notification: email, HTTP, HTTPS, TCP and SNMP trap PTZ: PTZ preset, start/stop guard tour Overlay text MQTT publish
Video compression	H.264 (MPEG-4 Part 10/AVC) Baseline, Main and High Profiles H.265 (MPEG-H Part 2/HEVC) Main Profile Motion JPEG	Data streaming	Event data
Resolution	Overview: 2880x2880 to 160x160 (1:1) Panorama: 3840x2160 to 192x72 (8:3, 16:9 or 32:9) Double panorama: 3584x2688 to 384x288 (4:3 or 16:9) Quad view: 3584x2688 to 384x288 (4:3 or 16:9) View area 1-4: 2048x1536 to 256x144 (4:3 or 16:9) Corner left/right: 3200x1600 to 192x72 (2:1 or 8:3) Double corner: 2880x2880 to 384x288 (1:1 or 4:3) Corridor: 2560x1920 to 256x144 (4:3 or 16:9)	Built-in installation aids	Pixel counter, digital roll, repositioning of quad views, digital PTZ of view areas, digital PT of panorama, corner, corridor and quad views
Frame rate	360° overview only, up to 2880x2880 without WDR: 25/30 fps @ 50/60 Hz 360° overview and 4 dewarped views with WDR: up to 12.5/15 fps @ 50/60 Hz	Analytics	
Video streaming	Multiple, individually configurable streams in H.264, H.265 and Motion JPEG Axis Zipstream technology in H.264 and H.265 Controllable frame rate and bandwidth VBR/ABR/MBR H.264/H.265	Applications	Included AXIS Motion Guard, AXIS Fence Guard, and AXIS Loitering Guard, AXIS Video Motion Detection, Active tampering alarm Supported AXIS Occupancy Estimator, AXIS Queue Monitor, AXIS People Counter, AXIS Tailgating Detector, AXIS Direction Detector, AXIS Random Selector Support for AXIS Camera Application Platform enabling installation of third-party applications, see axis.com/acap
Image settings	Compression, color saturation, brightness, sharpness, contrast, local contrast, white balance, day/night threshold, tone mapping, exposure control (including automatic gain control), exposure zones, Forensic WDR: up to 120 dB depending on scene, fine tuning of low-light behavior, dynamic text and image overlay, mirroring, digital roll, polygon privacy masks	General	
Pan/Tilt/Zoom	Digital PTZ of view areas, digital PT of panorama, corner, corridor and quad views, preset positions, guard tour	Casing (x)	A = Aluminum S = Stainless Steel
Audio		Weight	A = 19 lbs (8.61 kg) S = 27 lbs (8.6 kg)
Audio input/output	Two-way audio connectivity via the optional AXIS T61 Audio and I/O Interfaces with portcast technology	Dimensions	Height: 11.5 in (292 mm) ø 8.6 in (218 mm)
Network		Power	44–57 Vdc 6.49W
Security	Password protection, IP address filtering, HTTPSa encryption, IEEE 802.1X (EAP-TLS)a network access control, digest authentication, user access log, centralized certificate management, brute force delay protection, signed firmware, secure boot	Storage Conditions	–40°C to 65 °C (–40°F to 149°F) Humidity 5–95% RH (non-condensing)
		Operating Conditions	0°C to +40°C Humidity 10–100% RH (condensing)
		Warranty	5-year limited warranty, see spectrumcamera.com/warranty

Specifications (continued)

Approvals	<p>Hazardous Area FM3600, FM3615, ANSI/ISA/EN/IEC/CAN/ CSA-C22.2 60079-0, ANSI/UL/EN/IEC/CAN/ CSA-C22.2 60079-1, ANSI/UL/IEC/CAN/ CSA-C22.2 60079-31</p> <p>EMC EN 55032 Class A, EN 50121-4, IEC 62236-4, EN 55024, EN 61000-6-1, EN 61000-6-2, FCC Part 15 Subpart B Class A, ICES-003 Class A, VCCI Class A, RCM AS/NZS CISPR 32 Class A, KC KN32 Class A, KC KN35</p> <p>Safety IEC/EN/UL 60950-22, IEC/EN/UL 62368-1, IS 13252</p> <p>Environment IEC 60068-2-1, IEC 60068-2-2, IEC 60068- 2-6, IEC 60068-2-14, IEC 60068-2-27, IEC 60068-2-78, IEC/EN 60529 IP66/IP67, IEC/EN 62262 IK10, NEMA 250 Type 4X, NEMA TS 2 (2.2.7-2.2.9)</p> <p>Network NIST SP500-267</p>
Explosion-proof Certifications	<p>USA (Divisions): Class I Division 1 Groups B,C,D T6, type 4X, IP66/67 Class II/III, Division 1, Groups E,F,G T6 Ta = 0°C to +40°C Certificate: FM17US0156X</p> <p>USA and Canada (Zones): Class I, Zone 1, AEx/Ex db IIB+H2 T6 Gb Ta 0°C to +40°C, Type 4X, IP66/67 Zone 21, AEx/Ex tb IIIC T85 °C Db Ta = 0°C to +40°C, Type 4X, IP66/67 Certificate: FM17US0156X and FM18CA0103X</p> <p>ATEX: II 2 G Ex db IIB+H2 T6 Gb Ta = 0°C to +40°C, IP66/67 II 2 D Ex tb IIIC T85 °C Db Ta = 0°C to +40°C, IP66/67 Certificate: FM18ATEX0057X</p> <p>IECEx: Ex db IIB+H2 T6 Gb Ta = 0°C to +40°C, IP66/67 Ex tb IIIC T85 °C Db Ta = 0°C to +40°C, IP66/67 Certificate: FMG 18.0020X</p> <p>INMETRO: Ex db IIB+H2 T6 Gb Ta = 0°C to +40°C, IP66/67 Ex tb IIIC Db T85 °C Ta = 0°C to +40°C, IP66/67 Certificate number: NCC 20.0083 X</p>
Video Management Software	<p>AXIS Companion, AXIS Camera Station, video management software from Axis Application Development Partners available at axis.com/ vms</p>
Languages (Camera)	<p>English, German, French, Spanish, Italian, Russian, Simplified Chinese, Japanese, Korean, Portuguese, Traditional Chinese</p>

