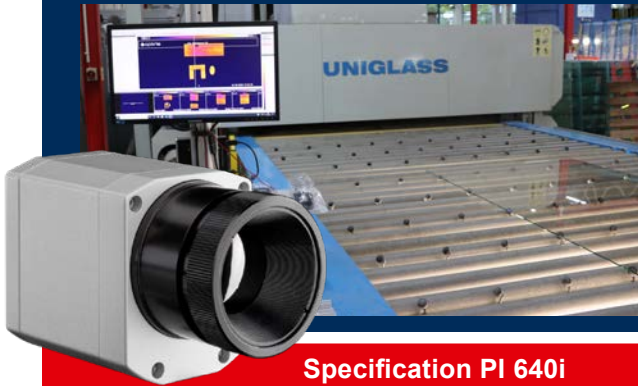


Glass inspection system for process control in glass tempering machines



Features

- Top down system with additional reference pyrometer from underneath for automatic emissivity correction on standard and Low-E glasses
- Digitally controlled lens protection system (DCLP) avoids extra air purging
- Glass area calculation
- Pre-assembled system for easy installation on glass tempering furnaces
- Automatic scan line adjustment – insensitive to distortions

Specification PI 640i

Optical resolution	640 x 480 pixels
Detector	FPA, uncooled (17 µm x 17 µm)
Spectral range	8 – 14 µm
Temperature ranges	-20 ... 100 °C, 0 ... 250 °C, (20) 150 ... 900 °C ¹⁾
Frame rate	32 Hz / 125 Hz @ 640 x 120 pixels
Optics (FOV)	60° x 45° FOV / f = 10.5 mm or 90° x 66° FOV / f = 7.7 mm
Thermal sensitivity (NETD)	40 mK
Accuracy	±2 °C or ±2 %, whichever is greater
PC interface	USB 2.0 / optional USB GigE (PoE) interface
Process interface (PIF), industrial	2x 0 – 10 V input, digital input (max. 24 V), 3x 0/4 – 20 mA output, 3x relais (0 – 30 V/ 400 mA), fail-safe relay
Ambient temperature	0 ... 50 °C
Relative humidity	20 – 80 %, non-condensing
Enclosure (size / rating)	46 x 56 x 76 – 100 mm (depending on lens + focus position) / IP 67 (NEMA)
Weight	269 - 340 g (depending on lens)
Shock / Vibration ²⁾	IEC 60068-2-27 (25G and 50G), IEC 60068-2-6 (sinus shaped), IEC 60068-2-64 (broadband noise)

Specification reference sensor CT G5L

Temperature range	100 °C ... 1200 °C
Spectral range	5 µm
Optical resolution (90 % energy)	10:1
System accuracy (at T _{Amb} 23 ±5 °C)	±2 °C or ±1 % ³⁾
Repeatability (at T _{Amb} 23 ±5 °C)	±0.5 °C or ±0.5 % ³⁾
Temperature resolution (NETD)	0.1 K
Response time (90 % signal)	120 ms
Emissivity/ Gain (adjustable via programming keys or software)	0.100 – 1.100
Environmental rating	IP 65 (NEMA-4)
Ambient temperature	-20 °C ... 85 °C (sensing head) 0 °C ... 85 °C (electronics)
Storage temperature	-40 °C ... 85 °C (sensing head) -40 °C ... 85 °C (electronics)
Vibration (sensor)	IEC 60068-2-6 / -64
Shock (sensor)	IEC 60068-2-27 (25 G and 50 G)
Weight	42 g (sensing head) 420 g (electronics)

Cable length

Electrical cabinet to PI imager (USB, PIF, Shutter)	10 m
Electrical cabinet to reference sensor (CT G5 head cable, Shutter)	10 m
Electrical cabinet to remote control box	10 m
Ethernet, Cat. 6	10 m

¹⁾ Accuracy effective starting at 150 °C

²⁾ For more details see operator's manual

³⁾ Whichever is greater

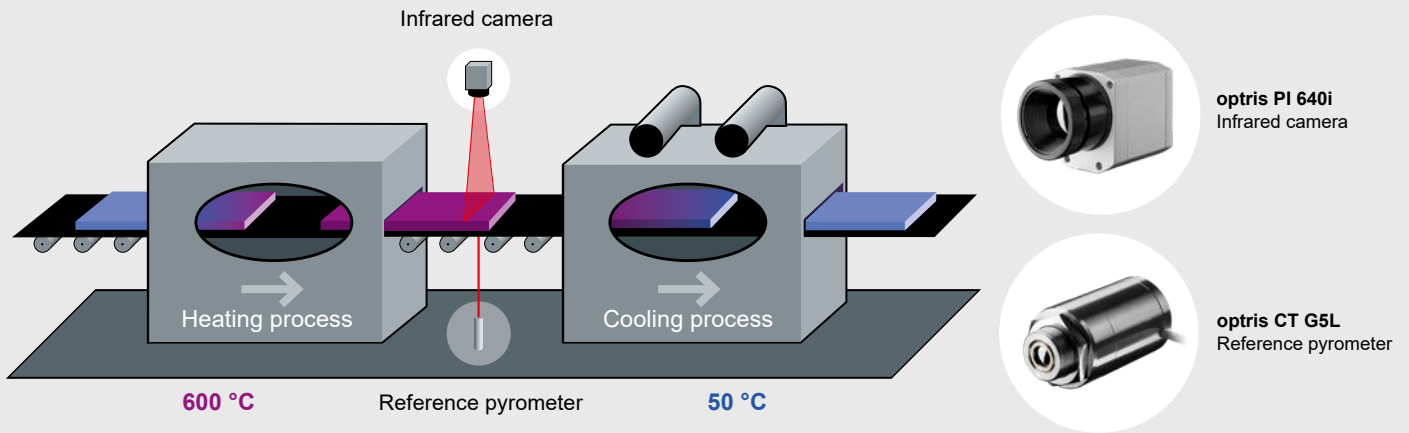
Scope of supply Top Down GIS 640 R

- PI 640i imager with 60° or 90° FOV
- Industrial Process Interface
- CT G5L reference sensor with USB interface and calibration certificate
- DCLP Shutter system with mounting brackets for imager and reference sensor
- USB Server Gigabit
- Control cabinet
- Cable set
- Remote control box
- Software package
- 100-230 V AC/ 24 V DC power supply for initial start-up

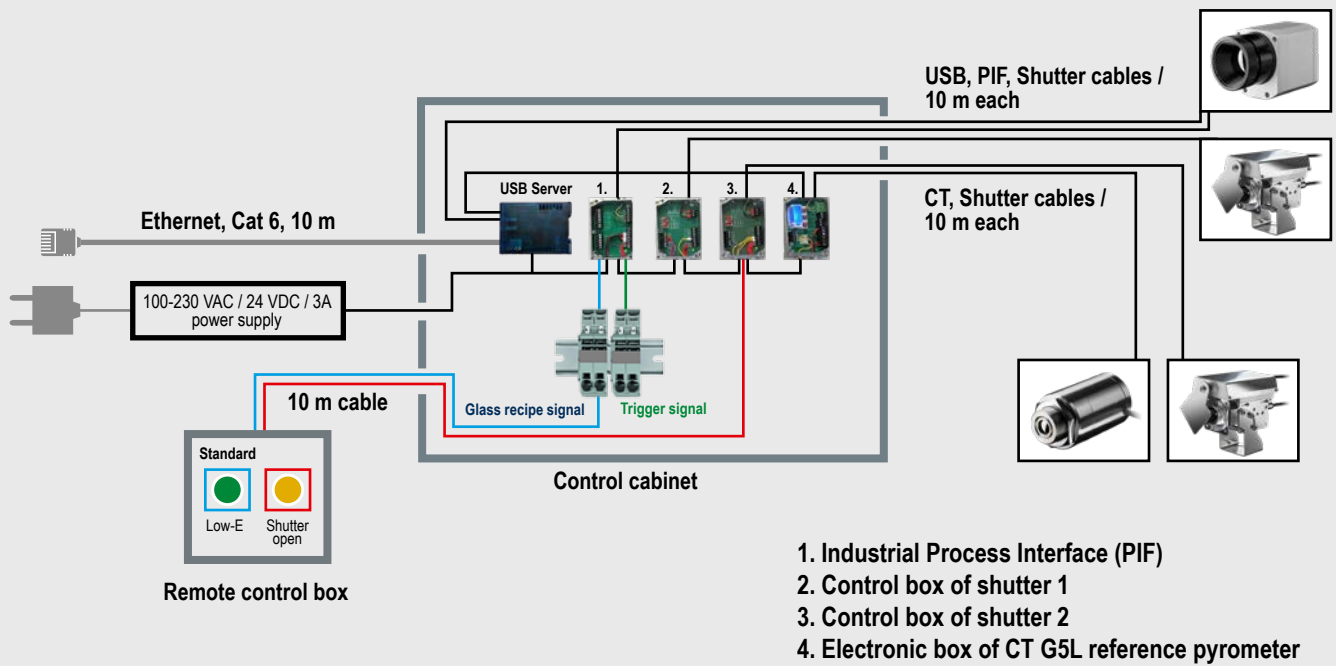
optris Top Down GIS 640 R

TECHNICAL DATA

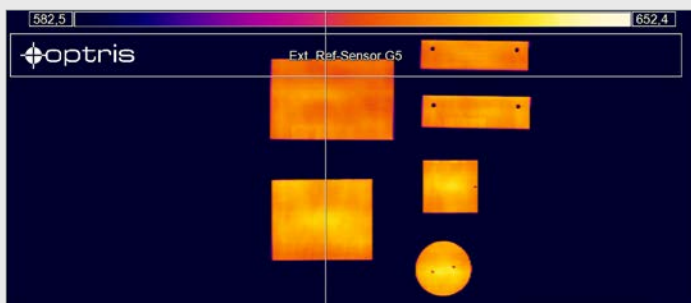
Measurement principle



System overview



Thermal image



Software PIX Connect

